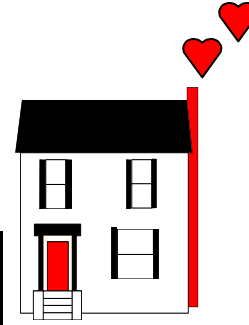
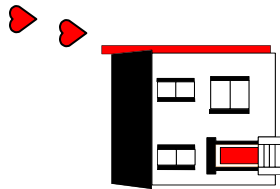


Rochester Childfirst Network
Family Child Care Satellites of
Greater Rochester
941 South Avenue
Rochester, New York 14620

Non-Profit Org.
U.S. Postage Paid
Rochester, N.Y.
Permit No. 1141



*Family Child Care
Satellites
of Greater
Rochester*

Early Care & Education
Professional Development
Course Calendar

**July - December
2011**

Coordinator's Office
228 East Main Street , Suite A13a
Rochester, N.Y. 14604
585-697-3569

Satellite Office @
The Community Place
of Greater Rochester
500 Carter Street
Rochester, N.Y. 14621
585-336-4683

Satellite Office @
Rochester Childfirst Network
941 South Avenue
Rochester, N.Y. 14620
585-461-3598




Family Child Care Satellite of Greater Rochester Membership Benefits

Membership Fees:

- ♥ Family Provider Membership \$50.00
CACFP Family Provider \$25.00
- ♥ Single Site Group Family Child Care Provider Membership \$75.00
CACFP Group Provider \$37.50

Benefits:

Discounts:

Field Trips	B.J's Membership
Free passes to the Seneca Zoo	School Specialty
Free gift with membership	Lakeshore Learning
Free passes to Planetarium and	Scholastic
Free passes to Rochester Museum, Science Center	Professional Development Workshops
Discount School Specialty	FCCSGR Bookstore-Redleaf Press

Services:

Early Childhood Consultant at Toy Resource Center	Screening & Referral for enrolled children
CDA Advisor	Notary Public

\$5.00 OFF



SAVE and become new member NOW!

Enclose coupon with check or money order to RCN

Name _____ Phone# _____

Address _____ City _____ Zip _____

Assistant _____

TOY RESOURCE CENTER

@ Lincoln Branch Library

851 Joseph Avenue

Rochester, N.Y. 4621

585-428-8210

Hours:

Monday & Wednesday 10:00am - 6:00pm

Thursday & Saturday 12:00am - 3:00pm

Did you know that there is an Early Childhood Specialist at the Toy Resource Center every Monday morning who is available for field trips, program planning and able to help you choose toys to borrow with your library card?

For more information call the FCCSGR office at 585-697-3569

Special Programs

If you are interested in participating in:

- advanced level professional development (a more in depth look at a specific topic)
- grant funded programs (i.e. home visiting, mentoring)
- research on the effectiveness of family child care for early care and education

Please call your local Satellite office or the FCCSGR office for additional information.

CEU's are issued for all professional development options listed on this page.

Table of Contents

Registration Policies and Procedures 2011 Education Incentive Program—Income Guidelines	4
New York State Training Requirements for Child Care	5
Plan Your Professional Development	6
Legally Exempt Training	7
Program Area 1	8-9
Program Area 2	10-11
Program Area 3	12-13
Program Area 4	14-15
Program Area 5	16
Program Area 6	17
OCFS Regulations	18
Program Area 7	19
Program Area 8	20
Program Area 9	21
Spanish Training at Eastside	22-23
CPR and First Aid	24-25
New York State Health and Safety @ Rochester Childfirst Network	26-27
New York State Health and Safety @ Eastside-Community Place	28-29
Toy Resource Center and Special Programs	30
Family Child Care Satellite of Greater Rochester - Benefits	31

Registration Policies and Procedures

Registration:

1. Call the Satellite office sponsoring the training.
2. You will be contacted the day before the workshop to confirm your attendance.
3. Please remember class size is limited and many classes have a waiting list. If you will be unable to attend, please notify the sponsoring satellite.

Fees:

1. Fees are due before workshop begin. Please arrive a few minutes early to handle transactions.
2. Payments must be cash or money order made out to the sponsoring satellite.
3. Fee for all satellite workshops is \$50.00 per 2.5 hr. workshop unless otherwise stated.

Scholarships:

Funding to assist you in paying for workshop attendance may be available through the Educational Incentive Program. To apply on line go to www.tsg.suny.edu For additional assistance you can contact EIP at eip@tsg.suny.edu or call 1-800-295-9616. Satellite staff are also available if you need assistance in completing the application. (See **Income Guidelines below**)

2011 Education Incentive Program—Income Guidelines

FAMILY SIZE	100%		75% of amount requested	
	1	2	3	4
1	\$0 - 25,548	\$25,549 - 38,322		
2	\$0 - 33,409	\$33,410 - 50,113		
3	\$0 - 41,270	\$41,271 - 61,904		
4	\$0 - 49,130	\$49,131 - 73,696		
5	\$0 - 56,991	\$56,992 - 85,487		
6	\$0 - 64,852	\$64,853 - 97,278		
Each Add'l	+ 7,861	+ 11,791		

New York State Health and Safety: This training series is required for anyone who wishes to become registered or licensed as a Family of Group Family Child Care Provider in New York State

CEU .25 or 2.5 hours

Payment Options

Full Payment - \$235.00 or

Five Payments at \$40.00 - Last Payment at \$35.00

You Must attend all Six Sessions to receive a Certificate

First Session Module 1 Introduction to Health & Safety Module 2 Creating a Safe Environment Module 3 Creating a Healthy Environment . (Part 1) Module 4 Creating a Healthy Environment (Part II) Module 5 Protect and Prevent Module 6 Emergency Preparation and Response	Aug. 10 Aug. 17 Aug. 24 Aug. 31 Sept. 7 Sept. 14	Wednesday 1:00pm 3:30pm	Spanish Eastside @ CPGR
Second Session Module 1 Introduction to Health & Safety Module 2 Creating a Safe Environment Module 3 Creating a Healthy Environment . (Part 1) Module 4 Creating a Healthy Environment (Part II) Module 5 Protect and Prevent Module 6 Emergency Preparation and Response	Oct. 5 Oct. 12 Oct. 19 Oct. 26 Nov. 2 Nov. 9	Wednesday 1:00pm 3:30pm	Spanish Eastside @ CPGR

New York State Health and Safety: This training series is required for anyone who wishes to become registered or licensed as a Family of Group Family Child Care Provider in New York State

CEU .25 or 2.5 hours

Payment Options

Full Payment - \$235.00 or

Five Payments at \$40.00 - Last Payment at \$35.00

You Must attend all Six Sessions to receive a Certificate

First Session Module 1 Introduction to Health & Safety	Aug. 11	Thursday 1:30pm 4:00pm	English Eastside @ CPGR
Module 2 Creating a Safe Environment	Aug. 18		
Module 3 Creating a Healthy Environment . (Part 1)	Aug. 25		
Module 4 Creating a Healthy Environment (Part II)	Sept. 8		
Module 5 Protect and Prevent	Sept. 15		
Module 6 Emergency Preparation and Response	Sept. 22		



New York State Training Requirements for Child Care

416.14 Training

(a) Before the Office issues an initial license, the person who will be the primary caregiver must complete training approved by the Office pertaining to the protection of the health and safety of children and must demonstrate basic competency with regard to health and safety standards. All health and safety training received after the application has been submitted but prior to issuance of the license may be applied to the initial fifteen (15) hours of training required in subdivision (b) of this subsection.

(b) Each provider, assistant and alternate assistant must complete a minimum of fifteen (15) hours of training during the first six months of licensure. Any person who becomes an assistant or alternate assistant after the initial licensure of the home must complete a minimum of fifteen (15) hours of training during the first six months after becoming an assistant or alternate assistant. In either case, this initial fifteen (15) hours applies toward the total thirty (30) hour minimum requirement for each licensure period. A total of (30) hours of training must be completed every two years.

417.14 Training

(a) Before the Office issues an initial registration, the person who will be the primary caregiver must complete training approved by the Office pertaining to the health and safety of children and must demonstrate basic competency with regard to health and safety standards. All health and safety training received after the application for family day care has been submitted but prior to issuance of the registration may be applied to the initial fifteen (15) hours of training required in subdivision (b) of this subsection.

(b) Each provider and alternate provider must complete a minimum of fifteen (15) hours of training during the first six months of registration. Any person who becomes an alternate provider after the initial registration of the home must complete a minimum of fifteen (15) hours of training during the first six months after becoming an alternate provider. In either case, this initial fifteen (15) hours applies toward the total thirty (30) hour minimum requirement for each registration period. A total of (30) hours of training must be completed every two years.

(Health and Safety Training can be found on page 20 – 23)

New York State Training Categories

Workshops must address each of the 9 program areas listed in the NYS Family/Group Family Child Care Regulations.

Program Area	Topic Area
P1	Principles of childhood development, including the appropriate supervision of children, meeting the needs of children enrolled in the program with physical or emotional challenges and behavior management and discipline
P2	Nutrition and health needs of children
P3	Child day care program development
P4	Safety and security procedures, including communication between parents and staff
P5	Business record maintenance and management
P6	Child abuse and maltreatment identification and prevention
P7	Statutes and regulations pertaining to child day care and
P8	Statutes and regulations pertaining to child abuse and maltreatment
P9	Prevention Shaken Baby Syndrome

Attendance & Arrival:

All classes begin promptly at 7:00 p.m. unless otherwise noted. No one will be admitted to class after 7:15 p.m. Children are not permitted in workshops.

New York State Health and Safety: This training series is required for anyone who wishes to become registered or licensed as a Family of Group Family Child Care Provider in New York State

CEU .25 or 2.5 hours

Payment Options

Full Payment - \$235.00 or
Five Payments at \$40.00 - Last Payment at \$35.00

You Must attend all Six Sessions to receive a Certificate

Second Session Module 1 Introduction to Health & Safety Module 2 Creating a Safe Environment Module 3 Creating a Healthy Environment . (Part 1) Module 4 Creating a Healthy Environment (Part II) Module 5 Protect and Prevent Module 6 Emergency Preparation and Response	Sep. 20 Sep. 27 Oct. 4 Oct. 11 Oct. 18 Oct. 25	Tuesdays 7:00pm 9:30pm	RCN
Third Session Module 1 Introduction to Health & Safety Module 2 Creating a Safe Environment Module 3 Creating a Healthy Environment . (Part 1) Module 4 Creating a Healthy Environment (Part II) Module 5 Protect and Prevent Module 6 Emergency Preparation and Response	Nov. 1 Nov. 8 Nov. 15 Nov. 22 Nov. 29 Dec. 6	Tuesdays 7:00pm 9:30pm	RCN

New York State Health and Safety: This training series is required for anyone who wishes to become registered or licensed as a Family of Group Family Child Care Provider in New York State

CEU .25 or 2.5 hours

Payment Options

Full Payment - \$235.00 or

Five Payments at \$40.00 - Last Payment at \$35.00

You Must attend all Six Sessions to receive a Certificate

First Session Module 1 Introduction to Health & Safety	Jun. 28	Tuesdays 7:00pm 9:30pm	RCN
Module 2 Creating a Safe Environment	Jul. 5		
Module 3 Creating a Healthy Environment . (Part 1)	Jul. 12		
Module 4 Creating a Healthy Environment (Part II)	Jul. 19		
Module 5 Protect and Prevent	Jul. 29		
Module 6 Emergency Preparation and Response	Aug. 2		
First Session Module 1 Introduction to Health & Safety	Aug. 9	Tuesdays 7:00pm 9:30pm	RCN
Module 2 Creating a Safe Environment	Aug. 16		
Module 3 Creating a Healthy Environment . (Part 1)	Aug. 23		
Module 4 Creating a Healthy Environment (Part II)	Aug. 30		
Module 5 Protect and Prevent	Sep. 6		
Module 6 Emergency Preparation and Response	Sep. 13		

LEGALLY EXEMPT TRAINING: This training class is optional for any Legally Exempt Provider, who wishes to receive a differential reimbursement rate for providing care.

In this training eight (8) of the nine (9) mandatory topics will be covered. **The Regulations class MUST be taken at the Child Care Council.**

CEU .50 or 5 hours

Payment \$50.00 for members of the Satellite office,
or \$70.00 for non-members.

Ask how to obtain your membership TODAY!






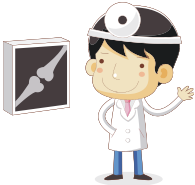
Saturdays LEGALLY EXEMPT CLASS	Oct. 8	9:30am– 2:30pm	NEW! RCN
	Oct. 15	9:30am– 2:30pm	

Program Area 1: Principles of childhood development: appropriate supervision of children, meeting the needs of children enrolled in the program with physical or emotional challenges and behavior management and discipline

CEU .25 or 2.5 hours

Course Registration Fee for each category class is:
For Members \$35.00 For Non-Members \$50.00 **Un-**
less otherwise stated

Title	Date	Time	Location
Diabetes Part 1 Instructor: Dorthea King-Simpson Diabetes and Obesity are two of the most serious health problems in America, and is more prevalent in the African-American and Hispanic communities. Let's learn how to manage them and or keep them at bay.	July 6	7:00pm-9:30pm	RCN
The Special Needs Series Part 1 Instructor: Diana Webb <u>Overview of Child Development and Individual Differences</u> - A review of the milestones in typical child development, what is the range of "typical" development, what are some red flags for concern. A basic overview of specific developmental delays and disorders like Autism, Down Syndrome, etc. Also Program Area #3	Aug. 15	7:00pm-9:30pm	RCN
Early Childhood Development Helping children develop to their potential through love, play and exploration of their environment.	Sept. 12	7:00pm-9:30pm	Eastside @ CPGR

 American Red Cross CPR with FIRST AID 	Spanish Wed. July 20 and Thurs. July 21	6pm-9pm Spanish and English Eastside @ CPGR
	Spanish Wed. Sept. 21 and Thurs. Sept. 22 English Tues. Dec. 27 and Wed. Dec. 28	
 American Red Cross Saturdays CPR with FIRST AID 	English Aug. 27 English Oct. 15 Spanish Nov. 19	9am-3pm Spanish and English Eastside @ CPGR



Cardiopulmonary Resuscitation (CPR) and First Aid Training Become a Requirement

CPR and First Aid: On August 13, 2010 a law was passed that requires all child care providers to have at least one employee who holds a valid certificate in cardiopulmonary resuscitation (CPR) and first aid on the premise of the child care program during the program's operating hours. As written, this law may require that most programs have multiple persons trained in both courses so that the program stays in compliance when any one of those trained staff persons is absent. In addition, substitutes for family day care providers would also need to be trained in CPR and First Aid when supervising children in the absence of a provider and alternate provider. This law goes into effect on December 11, 2010.

In this training basic first responder techniques are taught using video, live demonstrations, and practice on manikins. Providers will learn the skills necessary to perform Infant and Child CPR. First Aid skills are also both performed and practiced.

CEU .45 or 4.5 hours

Payment (a **\$10 non-refundable fee** is required prior to class)

CPR only-\$56.00 for members of the Satellite office, or \$160 for non-members.

CPR with First Aid-\$63.00 for members of the Satellite office, or \$180

Class size is limited and requires prior registration.

Program Area 1: Principles of childhood development: appropriate supervision of children, meeting the needs of children enrolled in the program with physical or emotional challenges and behavior management and discipline

CEU .25 or 2.5 hours

Course Registration Fee for each category class is:
For Members \$35.00 For Non-Members \$50.00 **Un-**
less otherwise stated

Title	Date	Time	Location
Learning Through Literacy Series Part 1 Instructor: Maria Rodriguez Come discover how children learn about music through sound, instruments, Rhythms and Rhymes. Come and share some of your favorite childhood memories. Also Program Area #3	Sep. 28	7:00pm 9:30pm	NEW! RCN
Learning Through Literacy Series Part 3 Instructor: Maria Rodriguez Come discover how children learn about music through sound, instruments, Rhythms and Rhymes. Come and share some of your favorite childhood memories. Also Program Area #7	Nov. 2	7:00pm 9:30pm	NEW! RCN

• In the center page we have provided you with a form to manage and record your training. Should you need a training transcript there will be a charge of \$10.00

Program Area 2: Nutrition and health needs of children

CEU .25 or 2.5 hours

Course Registration Fee for each category class is:
For Members \$35.00 For Non-Members \$50.00 Un-
less otherwise stated.

Title	Date	Time	Location
Diabetes Part 2 Instructor: Dorthea King-Simpson Come discuss how foods impact the body, what healthy eating looks like and how to make ethnic food recipes all while having fun preparing and tasting wonderful food.	Jul. 13	7:00pm-9:30pm	RCN
Health Needs of Infants and Children Acknowledging hearing and speech problems and other issues that require outside help to correct.	Jul. 25	7:00pm 9:30pm	Eastside @ CPGR
CACFP/Nutrition Using seasonal foods and serving foods that meet the health of overweight and inactive children.	Sept. 28	7:00pm 9:30pm	Eastside @ CPGR
The Special Needs Series Part 6 Instructor: Diana Webb Autism— focuses on medical background of autism, causes, diagnosis, methods of treatment, strategies to help, red flags. Also Program Area #1 & #3	Oct. 10	7:00pm-9:30pm	RCN

The following workshops are offered at Eastside Family Daycare for Spanish speaking providers.

CEU .25 or 2.5 hours

Course Registration Fee for each category class is:
Members \$35.00 For Non-Members \$50.00
Unless otherwise stated.

Title	Date	Time	Location
Procedimientos de Cuidado y Seguridad del cuidado a manejar correctamente la violencia.	Oct. 4	7:00pm-9:30pm	Spanish @CPGR Area #4
Mantenimiento de Manejo y Negocio Hablamos sobre la importancia de organizar y archivar documentos relacionados y requeridos con su cuidado. Estrategias, gastos, finanzas, contratos, y maneras de promocionar su negocio.	Oct. 18	7:00pm-9:30pm	Spanish @CPGR Area #5
SIDS/Sindrome de Agitar a un Bebe Identificar, Prevencion, y Responsabilidades para evitar que suceda.	Nov. 1	7:00pm-9:30pm	Spanish @CPGR Area #8
CACFP/Nutricion us, hojas de asistencia y reglamentos de CACFP.	Nov.15	7:00pm-9:30pm	Spanish @CPGR Area #2
Abuso Infantil y las Regulaciones algun maltrato infantil.	Dec.6	7:00pm-9:30pm	Spanish @CPGR Area #6/8

The following workshops are offered at Eastside Family Daycare for Spanish speaking providers.

CEU .25 or 2.5 hours

Course Registration Fee for each category class is:
Members \$35.00 For Non-Members \$50.00
Unless otherwise stated.

Title	Date	Time	Location
Estatutos y Regulaciones del Programa	Jul. 5	7:00pm-9:30pm	Spanish @CPGR Area #7
Desarrollo Infantil Temprana complete potencial y capacidad por medio del amor, juegos y exploracion en su ambiente.	Jul. 26	7:00pm-9:30pm	Spanish @CPGR Area #1
CACF/Nutricion saludables y activos.	Aug. 16	7:00pm-9:30pm	Spanish @CPGR Area #2
	Aug. 30	7:00pm-9:30pm	Spanish @CPGR Area #2
Desarrollo de Programa y aprender de ellas. Charla sobre maneras de extender un libro o una actividad para hacerlo mas divertido.	Sept. 27	7:00pm-9:30pm	Spanish @CPGR Area #3

Program Area 2: Nutrition and health needs of children

CEU .25 or 2.5 hours

Course Registration Fee for each category class is:
For Members \$35.00 For Non-Members \$50.00
Unless otherwise stated.

Title	Date	Time	Location
Learning Through Literacy Series Part 2 Instructor: Maria Rodriguez Dramatic play activities are a fun way to teach children about literacy while expanding their vocabulary skills, unleashing their imagination and interacting with others.	Oct. 24	7:00pm-9:30pm	NEW! RCN
Health Needs of Infants and Children Germs and illness in day care. Keeping everyone healthy through prevention and good choices.	Nov. 22	7:00pm-9:30pm	Eastside @ CPGR
CACFP/Nutrition Let's discuss some new menu ideas— bring a recipe or meal/snack suggestion to share. How to use cycle menus that are acceptable to CACFP and easier for providers.	Nov. 29	7:00pm-9:30pm	Eastside @ CPGR

Do You Need a Few Reminders/Clarifications Concerning Past Correspondence on New Laws?
The Division of Child Care Services posts all "Dear Provider" letters to its website at:
<http://www.ocfs.state.ny.us/main/childcare/letters.asp>.
If you need information from past correspondence, you will be able to see it on the website. Here's an additional tip: letters are posted and available on the website much sooner than the hard copy letter reaches you.

Program Area 3: Child day care program development

CEU .25 or 2.5 hours

Course Registration Fee for each category class is:
For Members \$35.00 For Non-Members \$50.00
Unless otherwise stated.

Title	Date	Time	Location
Diabetes Part 3 Instructor: Dorthea King-Simpson Come and learn how to keep Diabetes and Obesity at bay by making small behavioral changes. Eating healthy is only one part, physical Activity will assist you in the making of a healthier you. Bring your Sneakers and dress to move!	Jul. 20	7:00pm-9:30pm	RCN
The Special Needs Series Part 3 Instructor: Diana Webb <u>Speech and Language Development and Delays</u> – focuses on speech disorders, language delays, hearing impairment, ideas for supporting children with speech and language needs and activities to help children develop language. Also Program Area #1	Sep. 7	7:00pm-9:30pm	RCN
Learning Through Literacy Series Part 1 Instructor: Maria Rodriguez Come discover how children learn about music through sound, instruments, Rhythms and Rhymes. Come and share some of your favorite childhood memories. Also Program Area #1	Sep. 28	7:00pm-9:30pm	NEW! RCN

Program Area 9: SIDS / Shaken Baby

CEU .25 or 2.5 hours

Course Registration Fee for each category class is:
Members \$35.00 For Non-Members \$50.00
Unless otherwise stated.

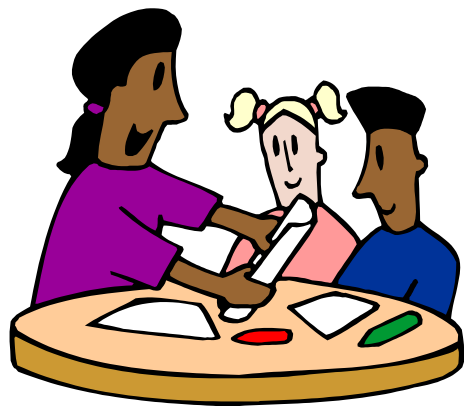
Title	Date	Time	Location
SIDS/Shaken Baby Syndrome Identification, Prevention, and Provider Responsibility in these tragic childhood problems.	Jul. 11	7:00pm-9:30pm	Eastside @ CPGR
SIDS and Shaken Baby Instructor: Kim Caimano Babies are delicate, come and learn best practices for preventing SIDS and Shaken Baby.	Aug. 8	7:00pm-9:30pm	RCN
SIDS and Shaken Baby Instructor: Dorthea King-Simpson Babies are delicate, come and learn best practices for preventing SIDS and Shaken Baby.	Oct. 5	7:00pm-9:30pm	RCN
SIDS/Shaken Baby Syndrome Keeping infants and toddlers safe - Knowing what a provider must do to help prevent SIDS and discussing some of the reasons people shake infants.	Nov. 8	7:00pm-9:30pm	Eastside @ CPGR
SIDS and Shaken Baby Instructor: Alicia Rouse Babies are delicate, come and learn best practices for preventing SIDS and Shaken Baby.	Dec. 19	7:00pm-9:30pm	RCN

Program Area 8: Statutes and regulations pertaining to child abuse and maltreatment

CEU .25 or 2.5 hours

Course Registration Fee for each category class is:
Members \$35.00 For Non-Members \$50.00
Unless otherwise stated.

Title	Date	Time	Location
Child Abuse and Child Abuse Regulations What is child abuse, a provider's responsibility when they suspect abuse and dealing with the abused child. Also Program Area #6	Sept. 19	7:00pm-9:30pm	Eastside @ CPGR
Taking Care of YOU!!! SPA DAY Instructor: Dorthea King-Simpson Come and relax, unwind, and pamper yourself...simply because you deserve it. Music, refreshments and special surprises are some of the fun things waiting for you. Also Program Area #6	Dec. 5	7:00pm-9:30pm	NEW! RCN



Program Area 3: Child day care program development

CEU .25 or 2.5 hours

Course Registration Fee for each category class is:
For Members \$35.00 For Non-Members \$50.00
Unless otherwise stated.

Title	Date	Time	Location
Program Development Learning to tweak an activity so different ages can enjoy and learn from it. Discussion on ways to extend a book or activity for more fun and understanding.	Oct. 11	7:00pm-9:30pm	Eastside @ CPGR
Learning Through Literacy Series Part 2 Instructor: Maria Rodriguez Come discover how children learn about music through sound, instruments, Rhythms and Rhymes. Come and share some of your favorite childhood memories.	Oct. 24	7:00pm-9:30pm	NEW! RCN
Make it & Take It—Hello Science Instructor: Layla Bell Come and explore some of the many ways you can incorporate science into your program, and have fun making a few small projects to take home.	Nov. 9	7:00pm-9:30pm	NEW! RCN



Program Area 4: Safety and security procedures, including communication between parents and staff

CEU .25 or 2.5 hours

Course Registration Fee for each category class is:

Members \$35.00 For Non-Members \$50.00

Unless otherwise stated.

Title	Date	Time	Location
<p>Safety and Security Procedures</p> <p>Is your daycare environment safe? And helping the daycare children deal with violence.</p>	Aug. 15	7:00pm-9:30pm	Eastside @ CPGR
<p>Disaster Preparedness</p> <p>Instructor: Elvis Hernandez of the American Red Cross</p> <p>September is Safety month.</p> <p>The Red Cross will provide us with safety information that can help you prepare for emergency situations in your daycare.</p> <p>Note: The contents of this class are free to all participants. The agency's facility use, and the Safely Preparedness Bag make up the cost of this class.</p>	Sep. 14	7:00pm-9:30pm	NEW! RCN
<p>The Special Needs Series Part 2</p> <p>Instructor: Diana Webb</p> <p><u>The Two Special Education Systems for Birth-5 years</u>– focuses on referral, documentation, evaluation process, parent communication and how to help parents, how to navigate the special education systems for children Birth-5 years.</p> <p>Also Program Area #7</p>	Aug. 22	7:00pm-9:30pm	RCN

Program Area 7: Statutes and regulations pertaining to child day care

CEU .25 or 2.5 hours

Course Registration Fee for each category class is:

Members \$35.00 For Non-Members \$50.00

Unless otherwise stated.

Title	Date	Time	Location
<p>The Special Needs Series Part 2</p> <p>Instructor: Diana Webb</p> <p><u>The Two Special Education Systems for Birth-5 years</u>– focuses on referral, documentation, evaluation process, parent communication and how to help parents, how to navigate the special education systems for children Birth-5 years.</p> <p>Also Program Area #4</p>	Aug. 22	7:00pm-9:30pm	RCN
<p>Learning Through Literacy Series Part 1</p> <p>Instructor: Maria Rodriguez</p> <p>Come discover how children learn about music through sound, instruments, Rhythms and Rhymes. Come and share some of your favorite childhood memories.</p> <p>Also Program Area #1</p>	Sep. 28	7:00pm-9:30pm	NEW! RCN
<p>Statutes and Regulations</p> <p>Good providers become better and new providers learn when they understand and follow the NYS regulations.</p>	Oct. 25	7:00pm-9:30pm	Eastside @ CPGR

OCFS Regulations

Family Child Care Regulations

417.10 Child Abuse and Maltreatment

(b) In accordance with the provisions of section 413 and 415 of the Social Services Law, the family day care provider, alternate provider, or substitute must report any suspected incidents of child abuse or maltreatment concerning a child receiving child day care to the Statewide Central Register of Child Abuse and Maltreatment or cause such a report to be made when the provider has reasonable cause to suspect that a child coming before them in their capacity as a provider of family day care is an abused or maltreated child. Such report must be followed by a written report within 48 hours, in the form and manner prescribed by the Office, to the child protective service of the social services district in the county in which the child resides.

Group Family Child Care Regulations

416.10 Child Abuse and Maltreatment

(b) In accordance with the provisions of section 413 and 415 of the Social Services Law, the group family day care provider, assistant, alternate assistant, or substitute must report any suspected incidents of child abuse or maltreatment concerning a child receiving child day care to the Statewide Central Register of Child Abuse and Maltreatment or cause such a report to be made when the provider has reasonable cause to suspect that a child coming before them in their capacity as a provider of group family day care is an abused or maltreated child. Such report must be followed by a written report within 48 hours, in the form and manner prescribed by the Office, to the child protective service of the social services district in the county in which the child resides.

Program Area 4: Safety and security procedures, including communication between parents and staff

CEU .25 or 2.5 hours

Course Registration Fee for each category class is:

Members \$35.00 For Non-Members \$50.00

Unless otherwise stated.

Title	Date	Time	Location
Free Class ***** Instructor: Elvis Hernandez of the American Red Cross The Red Cross has helpful information that will be of assistance to you in the day to day operations of your business. This complimentary class is <u>EXCLUSIVELY</u> offered to Licensed providers who have taken 3 or more classes with RCN, between May and Oct 2001	Nov. 16	7:00pm-9:30pm	NEW! RCN
Safety and Security Are you ready for an emergency? Bring prepared for the unexpected.	Dec. 20	7:00pm 9:30pm	Eastside @ CPGR

Training Hours: The change in law that allows the Division to increase the numbers of years between renewals from two years to four years **does not change the requirement in law that all day care employees receive 30 hours of training every two years. Thirty hours of training every two years remains the requirement.** Licensors and registrars will be requiring documentation of training from all programs at the two year mark, in a four-year license. All providers and employees must also complete a minimum of fifteen hours of training during the first six months of licensure/registration or employment.

Program Area 5: Business record maintenance and management

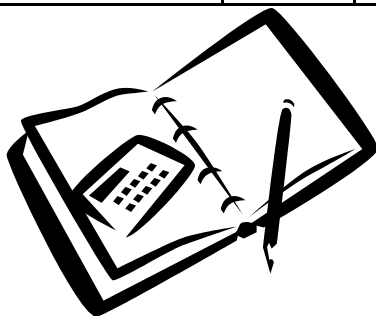
CEU .25 or 2.5 hours

Course Registration Fee for each category class is:

Members \$35.00 For Non-Members \$50.00

Unless otherwise stated.

Title	Date	Time	Location
Business Maintenance and Management We will discuss organizing required paperwork, financial planning — income vs expenses, contracts, and ways to advertised your business.	Aug. 22	7:00pm-9:30pm	Eastside @ CPGR
The Record Keeping and Taxes Instructor: Joseph Mantione Documentation and record keeping are important for managing your business and being prepared for tax time. Also Program Area #7	Nov. 30	7:00pm-9:30pm	NEW! RCN
Business Maintenance and Management Getting ready for tax time. Have you been diligent about saving your receipts, have you kept good income expenses records, in your business information organized?	Dec. 13	7:00pm-9:30pm	Eastside @ CPGR



Program Area 6: Child abuse and maltreatment identification and prevention

CEU .25 or 2.5 hours

Course Registration Fee for each category class is:

Members \$35.00 For Non-Members \$50.00

Unless otherwise stated.

Title	Date	Time	Location
Child Abuse and Child Abuse Regulations What is child abuse, a provider's responsibility when they suspect abuse and dealing with the abused child. Also Program Area #8	Sept. 19	7:00pm-9:30pm	Eastside @ CPGR
The Special Needs Series Part 4 Instructor: Diana Webb <u>Factors in Helping to Prevent Behavior Problems</u> - focuses on positive behavior support, prevention of negative behaviors, factors leading to behavior problems, coping strategies, common stressors in children's lives, strategies to promote positive behavior. Also Program Area #1 & #3	Sept. 19	7:00pm-9:30pm	RCN
The Special Needs Series Part 5 Instructor: Diana Webb <u>Behavior Issues and ADD/ADHD</u> - focuses on additional factors for children with ADHD in behavior: strategies to help understanding of why children with ADHD may also exhibit "negative" behaviors, how to view the behaviors differently. Also Program Area #1 #3	Oct. 3	7:00pm-9:30pm	RCN
Taking Care of YOU!!! SPA DAY Instructor: Dorthea King-Simpson Come and relax, unwind, and pamper yourself...simply because you deserve it. Music, refreshments and special surprises are some of the fun things waiting for you. Also Program Area #8	Dec. 5	7:00pm-9:30pm	NEW! RCN